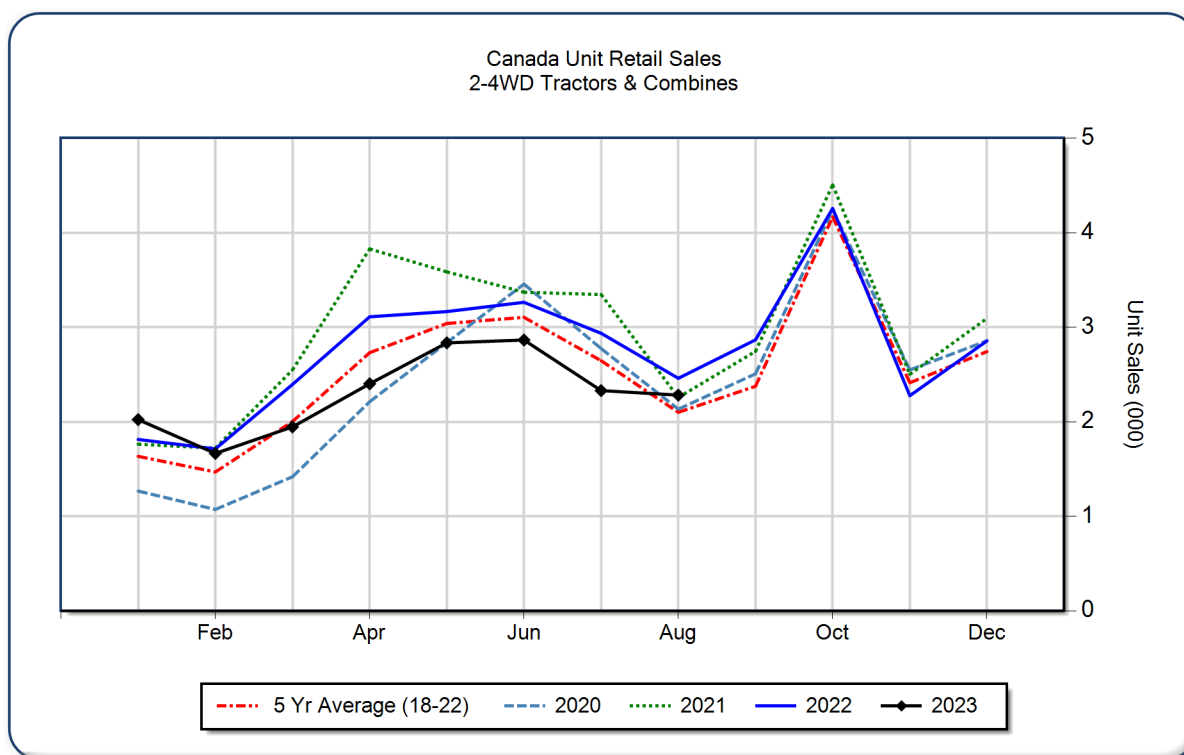


AEM Canada Ag Tractor and Combine Report August 2023

Copyright, AEM. All rights reserved. If data is referenced, please acknowledge AEM as the source.

	August			YTD - August			Beginning Inventory Aug 2023
	2023	2022	%Chg	2023	2022	%Chg	
2WD Farm Tractors							
< 40 HP	1,381	1,498	-7.8	10,620	13,282	-20.0	12,838
40 < 100 HP	408	432	-5.6	3,533	3,849	-8.2	4,612
100+ HP	260	247	5.3	2,374	2,297	3.4	1,943
Total 2WD Farm Tractors	2,049	2,177	-5.9	16,527	19,428	-14.9	19,393
4WD Farm Tractors	52	64	-18.8	565	487	16.0	86
Total Farm Tractors	2,101	2,241	-6.2	17,092	19,915	-14.2	19,479
Self-Prop Combines	181	219	-17.4	1,256	943	33.2	454



The AEM Ag Tractor and Combine Report is provided monthly and is derived from AEM member companies through proprietary statistical reporting programs. The data is provided by AEM members and represents preliminary monthly retail sales of Ag equipment. Separate reports are available for the U.S., Canada and Russia. For more information, please visit: <https://www.aem.org/market-share-statistics/us-ag-tractor-and-combine-reports>. **Attention Media:** To speak with an AEM spokesperson about the data, please contact Sandra Mason at smason@aem.org.